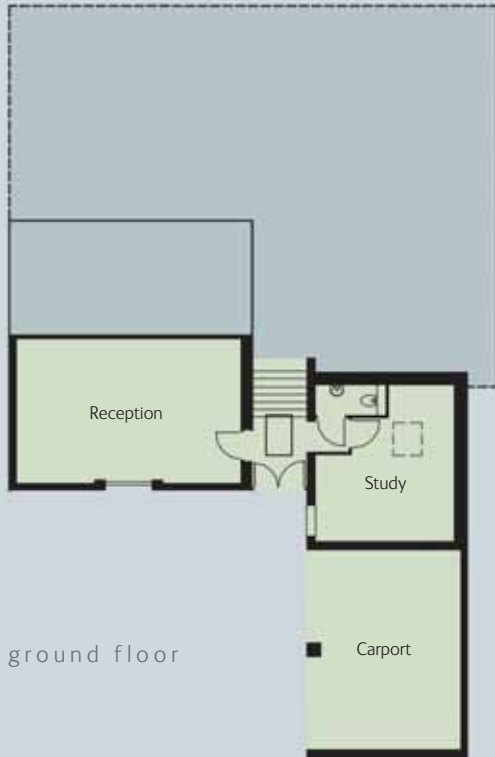


plot 01



Four bedroomed home

Created from the shell of the former stable, this luxury 4 bedroom home offers 2,400 sq ft of living space. Features an open plan galleried living area, a luxury kitchen and 2 ensuite bedrooms, plus 2 further bedrooms served by a family bathroom. Exposed timber trusses reveal an unmistakable character.

ground floor

Reception

4.20 x 6.50m (13'7" x 21'2")

Study

4.10 x 4.60m (13'4" x 15'0") max

Kitchen

5.15 x 4.85m (16'8" x 15'9")

Lounge

7.30 x 5.80m (23'9" x 19'0")

first floor

Bed 1

4.25 x 5.35m (13'9" x 17'5")

Bed 2

3.50 x 6.10m (11'4" x 20'0") max

Bed 3

2.85 x 4.85 (9'3" x 15'9")

Bed 4

2.35 x 4.25 (7'7" x 13'9")

Call 0116 239 0600 for a brochure or more information



View by appointment only.

CAWREY LIMITED Kirby Grange Farm, Taverner Drive, Ratby, Leicester. LE6 0HQ

Property Misdescription Act 1991

Although every care has been taken to ensure the accuracy of the information in this brochure, exact details may vary during the course of construction and no responsibility can be accepted for any mis-statements in this brochure, which is not a contract. The company reserves the right to alter specifications without notice.



www.cawrey.co.uk